



classiccaladiumsllc.com

General Information about Caladium Bulbs (size, counts/box, box size, storage, leaf types, bulbs/size/pot size)

Bulb Sizes:

Caladium bulbs come in various sizes based on the diameter of the bulb. The bulbs are categorized into four traditional sizes:

No. 4: < 3/4"

No. 3: 3/4 to 1"

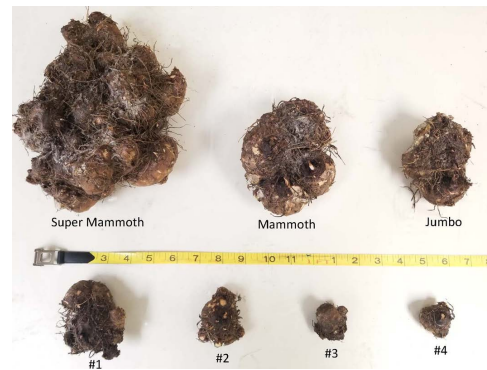
No. 2: 1" to 1 1/2"

No. 1: 1 1/2" to 2 1/2"

Jumbo: 2 1/2" to 3 1/2"

Mammoth: 3 1/2" to 4 1/2"

Super Mammoth: 4 1/2" Up



Recently a market has been developing for No. 3 (seed stock size) bulbs. This size is suitable for 4 1/2" pots and under. The size of the No. 3 bulbs is less than 1 inch.

Bulb Storage:

Caladiums are tropical plants, and bulbs must be stored at temperatures above 60°F (16°C) with a relative humidity in the neighborhood of 75%. Also, there needs to be good air exchange to prevent build-up of gases. Caladiums are particularly sensitive to the presence of ethylene gas. When storing caladiums, unpack them immediately upon arrival and store them in open trays with proper air circulation. Exposing bulbs to cold temperatures will cause them to sprout slowly and erratically and cold may stunt the crop.

Cultivars:

There are two distinct types of Caladiums: Fancy Leaf and Strap Leaf varieties. Fancy Leaf Caladiums have broad heart-shaped or arrowhead-shaped leaves and generally grow taller than Strap Leaf and Dwarf varieties. Strap Leaf Caladiums have pointed, narrow, heart shaped leaves

producing a compact plant with more leaves than fancy leaved cultivars; these are ideal for pot production and hanging baskets.

Minimum Quantities:

Boxing for wholesale orders has been standardized in the industry accordingly:

Bulb Size	#/Box
#4	1000
#3	800
#2	400
#1	200
#Jumbo	100
#Mammoth	50
#Super Mammoth	25

Caladium Bulb producers have minimum order quantities which tend to be 5 or more boxes.

Shipping Information:

The standard industry box dimensions are 11” (20 CM) H X 18” (45 CM) W X 14” (35 CM) D or .5 cubic feet or .15 cubic meters. Boxes on average weigh 30 lbs or 13.5 Kg, however individual boxes must be weighted to get exact weight at time of shipping. Prices tend to be FOB.

Pot Size:

- 4” (10.2 cm) Pot – 2 Bulbs No. 2 size or 1 Bulb No. 1 size
- 4 ½” (11.5 cm) Pot – 2 to 3 Bulbs No. 2 size or 1 Bulb No. 1 size
- 6” (15.4 cm) Pot – 5 to 6 Bulbs No. 2 size or 3 Bulbs No. 1 size
- 6 ½” (16.7 cm) Pot – 7 to 8 Bulbs No. 2 size or 4 Bulbs No. 1 size
- 10” (25.5 cm) Bulb Pan – 10 to 12 Bulbs No. 2 size or 5 to 6 Bulbs No. 1 size
- 10” (25.5 cm) Hanging Basket – 10 to 12 Bulbs No. 2 size or 5 to 6 Bulbs No. 1 size